

Camping Pradelongue – Rental contract for a Mobile Home

+33 5 61 79 86 44 - www.camping-pradelongue.com - contact@camping-pradelongue.com
SAS with a capital of 60 000 € - SIRET 335 002 127 00017 – MOUSTAJON 31110 LUCHON



Surname:

First name:

Address:

Number of people: (Dogs are not allowed in the Mobile-Home)

Children's age:

Mobile-home selected: Ophéa 26m² - Declik 29m² - Taos F4 35 m² - Taos F6 40 m²

From / / to / / (Arrival until 4 pm, departure before 10 am)

Deposit:

- Account of 25 % of the total rent: (1)
- Reservation fee (fix): 13,00 € (2)
- Insurance in case of cancellation (optional): 2.90 % of the stay: (3)

Total (1) + (2) + (3) =

The balance of the rental price must be paid one month before your stay.

This document, issued in two copies, shall have the value of a **contract**. When signing, the customer agrees to pay the full rental price corresponding to the booking dates he or she indicates. All rentals are nominative and can under no circumstances be transferred or sublet.

Modification and cancellation of stay: see our general sales conditions 2021 (more flexible due to sanitary conditions) and which are an integral part of this contract.

Cancellation and interruption of stay insurance: You can take out cancellation insurance at the rate of 2.9% of the amount of the stay with the following guarantees:

- Cancellation of stay
- Interruption of stay
- Late arrival
- Vehicle replacement
- Forgetting a personal object in the rental
- Covid 19 extension

Security deposit: A security deposit of €200.00 will be required upon arrival, it will be fully refunded if no damage is found during the check-out inventory, and if the cleaning has been completed.

NB: The customer must be in possession of up-to-date civil liability insurance and must comply with the campsite rules.

Disputes concerning this contract will be submitted to the mediation of Medicys.

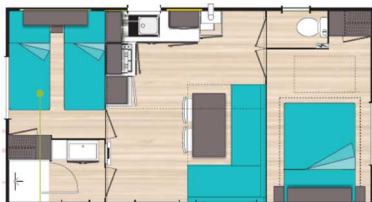
Date: / /

Tenant signature:

Date: / /

Manager signature:

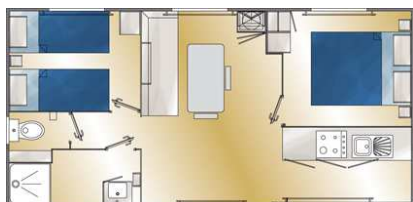
MH:



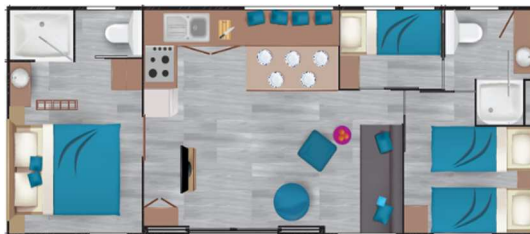
M H OPHEA 26m²- 2009 and 2012
5 people - 2 bedrooms - 1 bathroom
1 toilet - 9m² paved terrace



M H TAOS F4 35m² - 2018, 2020 and 2021
4 people - 2 bedrooms - 2 bathrooms
2 toilets – 19 m² terrace



M H DECLIK 29m² - 2017, 2018 and 2020
5 people - 2 bedrooms - 1 bathroom
1 toilet - 15 m² terrace



M H TAOS F6 40m² - 2018, 2020 and 2021
6 people – 3 bedrooms - 2 bathrooms
2 toilets - 22,5 m² terrace

MOBIL HOME EQUIPEMENT

Bedroom 1:

1 bed 140 cm (160x200 **)
(lath-work support)
1 mattress
1 canvas under
2 pillows
2 blankets
1 hanging wardrobe

Bedroom 2:

2 beds 80 cm lath-w.
1 bunk bed (except **)
3 mattresses
3 canvas under covers
3 pillows
3 blankets
1 open hanging wardrobe
1 pedestal cupboard

Bedroom 3 cabin **:

2 beds (1 bunk bed)

Bathroom 1:

Shower
Sink
Bathroom bin
Hair dryer*

Bathroom 2 **:

Shower
Sink
Bathroom bin
Toilet

Kitchen /living room:

1 sink
1 4-burner gas stove
1 fridge freezer
1 microwave oven
1 microwave lid
1 couch
1 table
2 chairs (3*)
1 cupboard
1 television
2 pouf chairs **
4 electric convectors
heaters

Dishes and utensils:

12 dinner plates
6 soup plates
6 dessert plates
6 bowls
6 cups + under-cups

10 glasses
5 wine glasses (6 **)
5 mugs* (6 **)
5 eggcups * (6 **)
1 carafe
24 pieces of tableware
(6 of each)
6 meat knives
1 kitchen knife
1 bread knife
1 spatula
1 potato peeler
1 salad cover
1 can opener
1 corkscrew
1 bottle opener
1 soup ladle
1 skimmer
1 strainer
1 cutting board
1 tablemat
1 salad spin
1 electric coffee machine
1 electric kettle *
1 toaster *
1 frying pan
1 stew pot
3 pans

2 lids
1 deep dish
1 flat dish
1 salad bowl

Household articles:

1 broom
1 mop
1 shovel
1 basin
1 wringer bucket
1 bucket
1 floor cloth
1 waste bin
1 tray *
1 draining board
15 coat hangers
1 ashtray
1 drying rack

Outdoor furniture:

1 table
5 chairs (6 **)
2 deckchairs
1 porch 9m

* for MH Declik et Taos F4 et F6

** for MH Taos F4 et F6

NB: The bunk bed is not suitable for a child under 7 years old. Sheets and linen are not provided but we can supply you with disposable sheets or fabrics. We also offer a barbecue for hire.

We kindly ask you to clean the Mobile Home before your departure, otherwise we will be obliged to deduct a cleaning fee of 50,00€ (70,00€ Taos F4 and F6) from your deposit.

Thank you for your understanding.

We wish you in advance a very pleasant stay at Camping PRADELONGUE.

Camping Pradelongue – Rental contract for a Coco Sweet

+33 5 61 79 86 44 - www.camping-pradelongue.com - contact@camping-pradelongue.com
SAS with a capital of 60 000 € - SIRET 335 002 127 00017 – MOUSTAJON 31110 LUCHON



Surname:

First name:

Address:

Number of people: (Dogs are not allowed in Coco Sweet)

Children's age:

From / / to / / (Arrival until 4 pm, departure before 10 am)

Deposit:

- Account of 25 % of the total rent: (1)
- Reservation fee (fix): 13,00 € (2)
- Insurance in case of cancellation (optional): 2.90 % of the stay: (3)

Total (1) + (2) + (3) =

The balance of the rental price must be paid one month before your stay.

This document, issued in two copies, shall have the value of a **contract**. When signing, the customer agrees to pay the full rental price corresponding to the booking dates he or she indicates. All rentals are nominative and can under no circumstances be transferred or sublet.

Modification and cancellation of stay: see our general sales conditions 2021 (more flexible due to sanitary conditions) and which are an integral part of this contract.

Cancellation and interruption of stay insurance: You can take out cancellation insurance at the rate of 2.9% of the amount of the stay with the following guarantees:

- Cancellation of stay
- Interruption of stay
- Late arrival
- Vehicle replacement
- Forgetting a personal object in the rental
- Covid 19 extension

Security deposit: A security deposit of €150.00 will be required upon arrival, it will be fully refunded if no damage is found during the check-out inventory, and if the cleaning has been completed.

NB: The customer must be in possession of up-to-date civil liability insurance and must comply with the campsite rules.

Disputes concerning this contract will be submitted to the mediation of Medicsys.

Date: / /

Tenant signature:

Date: / /

Manager signature:

N°:



Coco Sweet 2017

COCO SWEET EQUIPEMENT

Bedroom:

1 bed 140cm wide
 1 mattress
 1 canvas under covers
 2 pillows 50*50
 2 blankets
 1 hanging wardrobe
 4 coat hangers
 1 mirror

Living room/bedroom:

2 benches 80cm wide
 2 pillows 50*50
 2 blankets
 4 storage boxes
 1 electric heater

Kitchen /dining room:

1 table
 4 stools
 1 induction cooking plate
 1 refrigerator
 1 microwave oven
 1 microwave cover

Dishes and utensils:

4 dinner plates
 4 soup plates
 4 dessert plates
 4 bowls
 4 cups
 6 glasses
 1 salad bowl

Table cover for 4 p

1 kitchen knife
 1 bread knife
 1 spatula
 1 soup ladle
 1 can opener
 1 corkscrew
 1 bottle opener

1 colander
 1 cutting board
 1 tablemat
 2 pans
 1 frying pan
 2 covers
 1 filter-coffee maker

Household articles:

1 broom
 1 mop
 1 dustpan
 1 basin
 1 waste bin

Outside equipment:

2 deckchairs
 1 porch
 1 table
 4 chairs

(Lock with keys)

NB: Coco Sweet have no running water (no toilet, no shower, no sink) but a fully equipped sanitary block is only 20 metres away.

Sheets and linen are not provided but we can supply you with disposable sheets or fabrics. We also offer barbecues for hire.

We kindly ask you to clean the Coco Sweet before your departure, otherwise we will be obliged to deduct a cleaning fee of 40,00€ from your deposit.

Thank you for your understanding.

We wish you in advance a very pleasant stay at Camping PRADELONGUE.